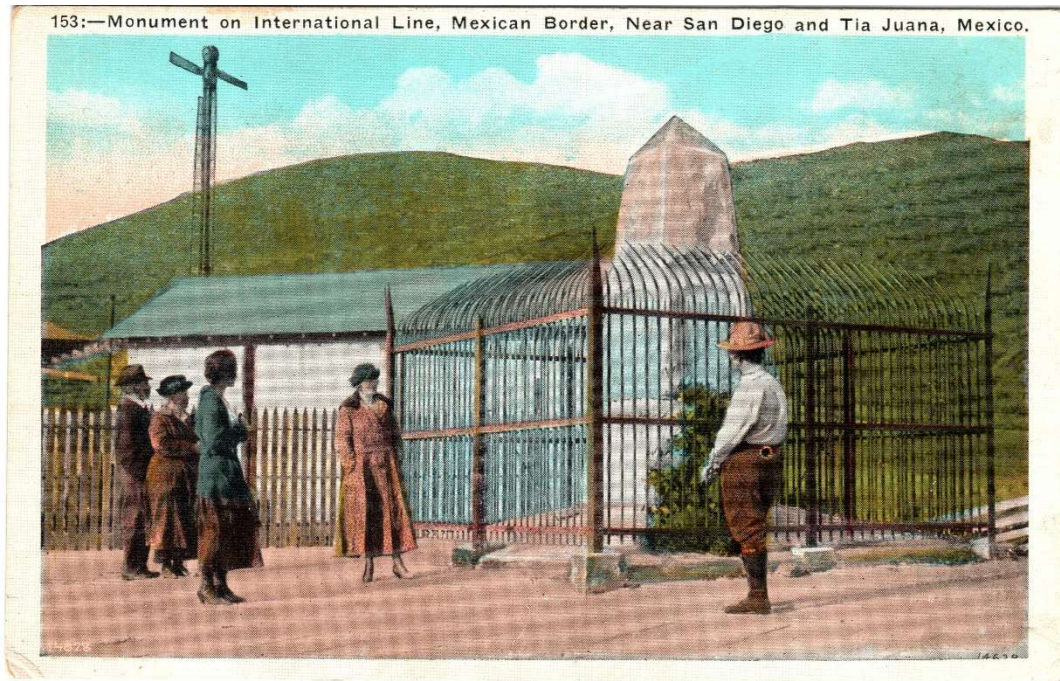


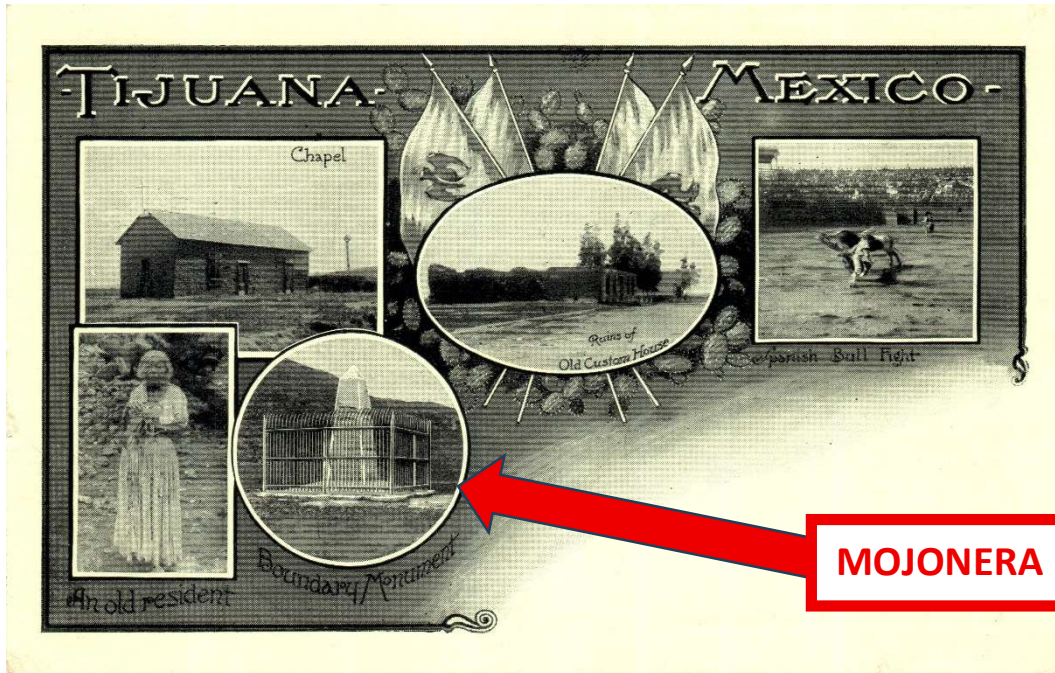
Las Mojoneras:
puntos turísticos en el
límite internacional entre
las californias y sus
tarjetas postales.

Fernando J. Elizondo Garza



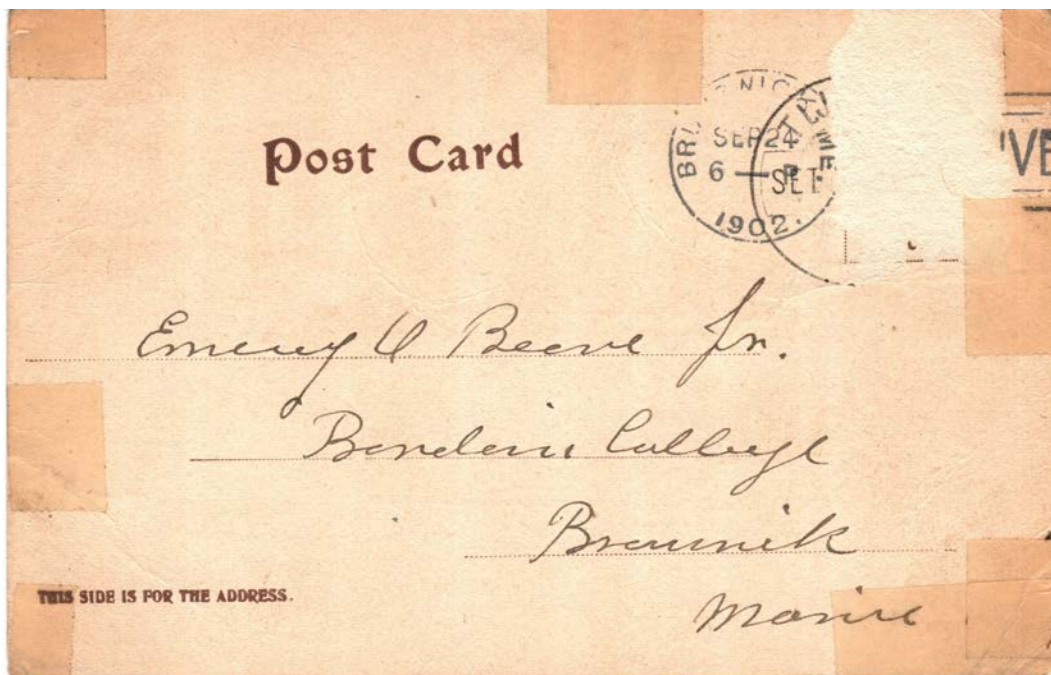
SOCIEDAD FILETÉLICA REGIMONTANA
CONGRESO MEXICANO DE TARJETAS POSTALES 2026

LOS MONUMENTOS (OBELISCOS) CONOCIDOS COMO “MOJONERAS” SON MONUMENTOS HISTÓRICOS INSTALADOS PRINCIPALMENTE A FINALES DEL SIGLO XIX PARA MARCAR LOS LÍMITES TERRESTRES ENTRE EN LA FRONTERA MÉXICO-ESTADOS UNIDOS, SUMANDO A LA FECHA 258 PRINCIPALES Y CIENTOS DE AUXILIARES.



DESTACA LA MOJONERA 258 EN TIJUANA, HECHA DE MÁRMOL ITALIANO,
 ASÍ COMO OTRAS EN LA FRONTERA ENTRE LAS CALIFORNIAS,
 QUE SE VOLVIERON PUNTO TURÍSTICO, Y TEMA DE TARJETAS POSTALES.

1902



Boundary Monument Tia Juana, Mexico.



100 11



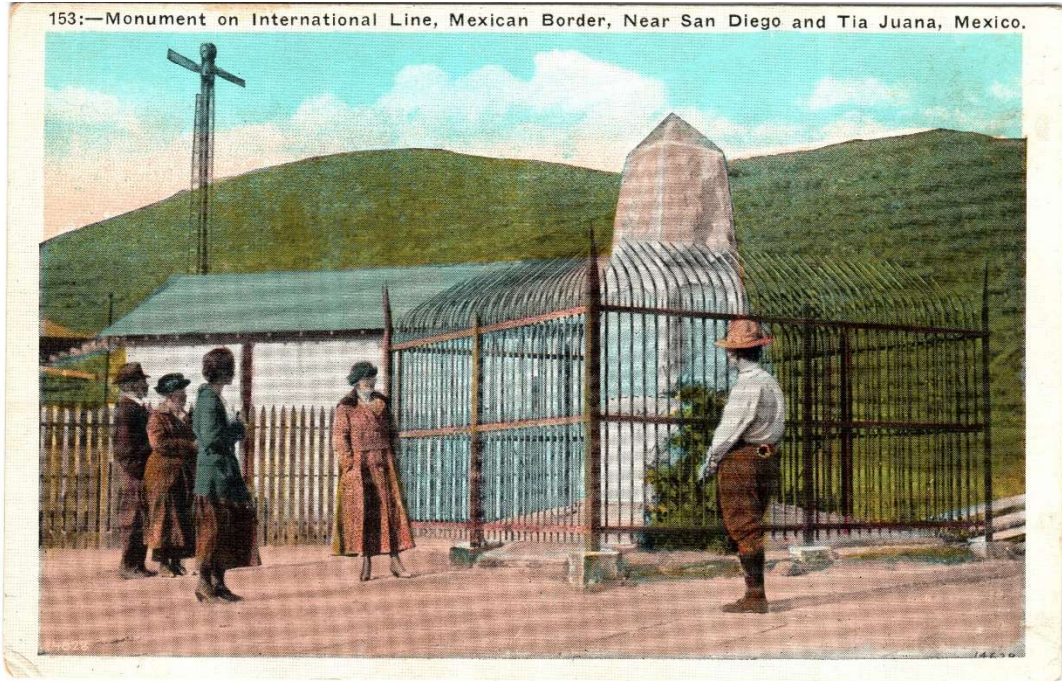
The Space above is reserved for Postmark.

POST CARD.

No. 6210. Publ. by Newman Post Card Co., Los Angeles, Cal. (Made in U.S.A.)
In Space below may be written Sender's Name and Address (no other writing).

Miss Margaret Lynch
24 Morris St
Auburn

153:—Monument on International Line, Mexican Border, Near San Diego and Tia Juana, Mexico.



25
POST  CARD

THIS SPACE FOR WRITING

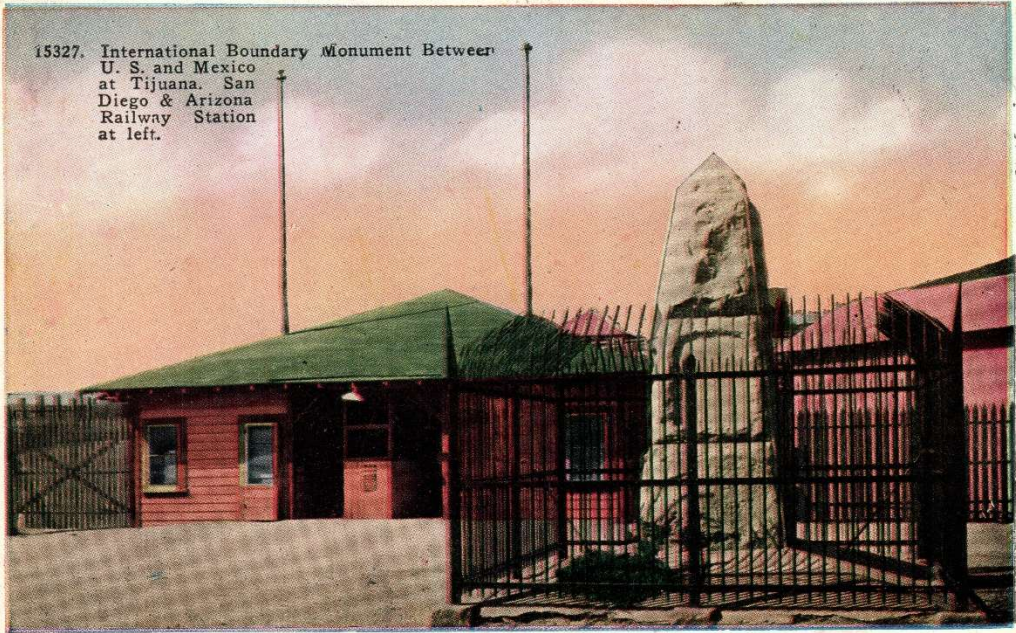
THIS SIDE IS FOR THE ADDRESS

PLACE
STAMP HERE

Pub. by the M. Kashower Co., Los Angeles, Cal.

MADE
IN
U.S.A.

15327. International Boundary Monument Between
U. S. and Mexico
at Tijuana. San
Diego & Arizona
Railway Station
at left.



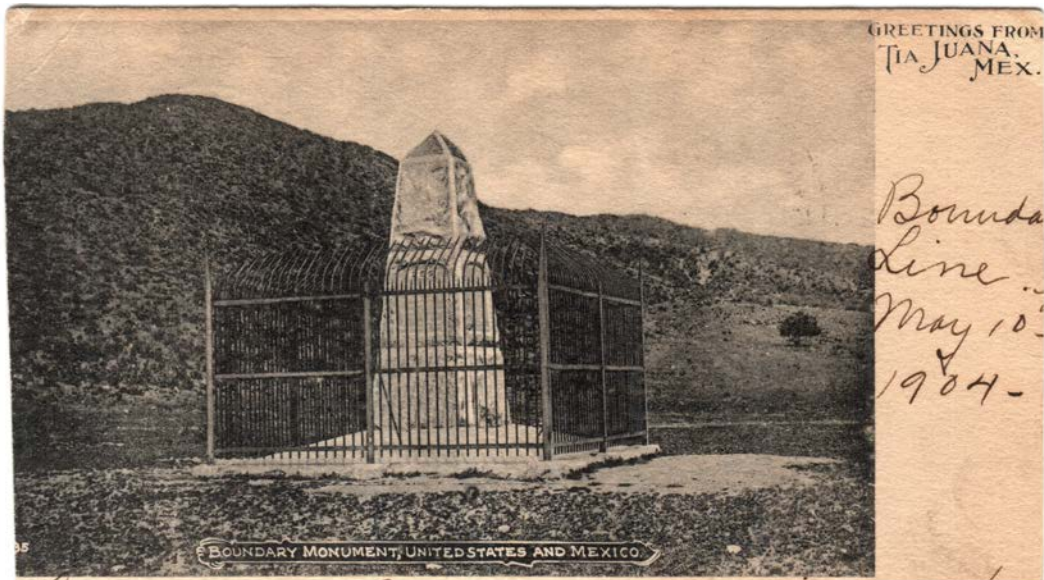
Pub. by the Lower California Commercial Co., Inc.
Tijuana—Mexicali—Ensenada—Tecate
Lower California, Mexico

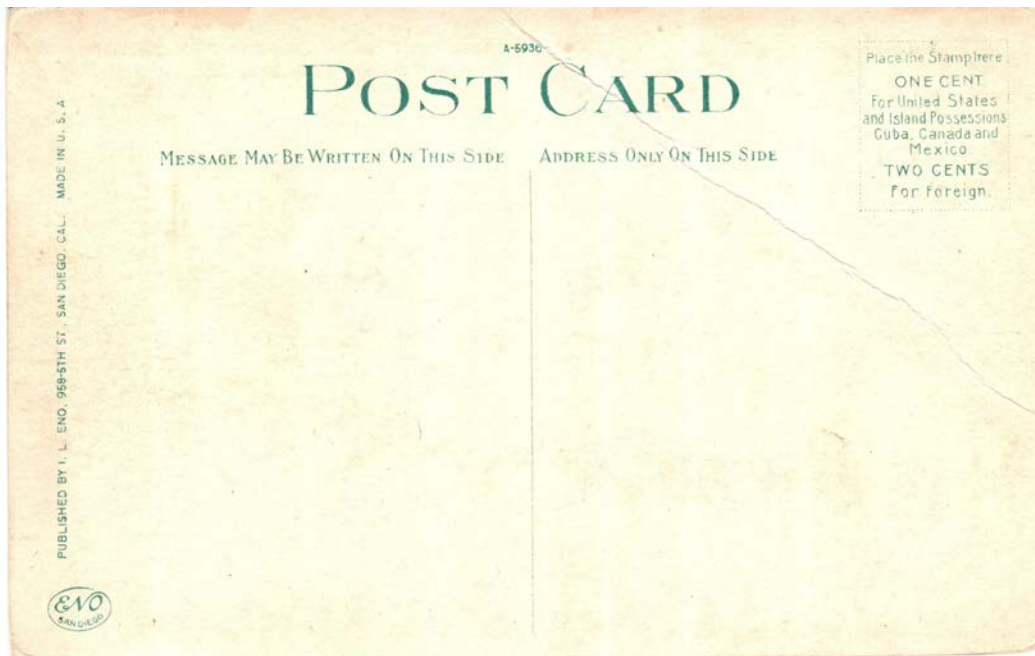
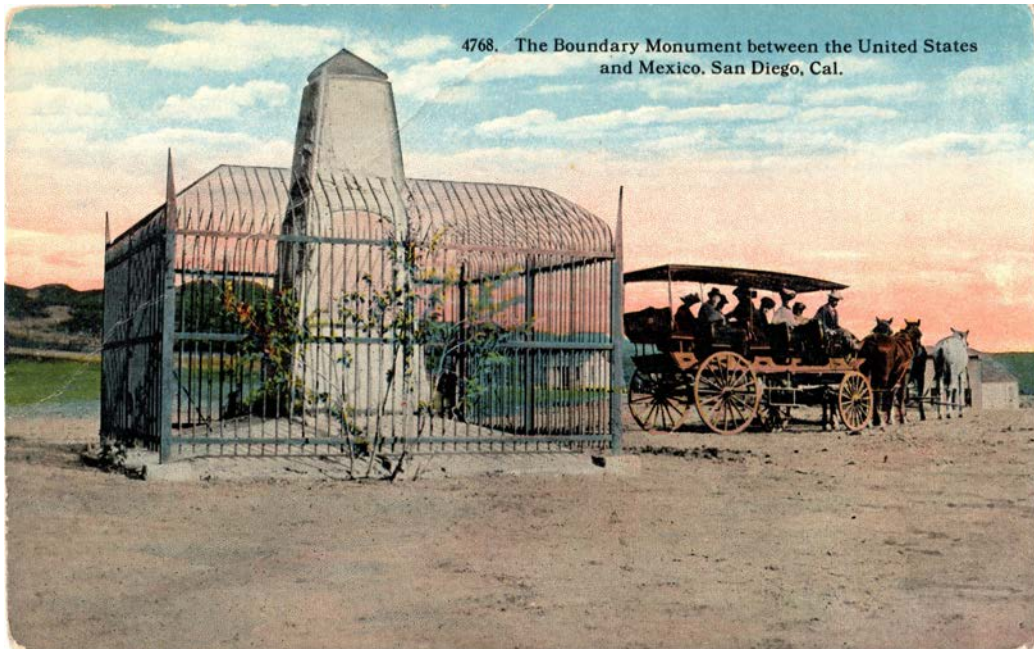
POST
CARD

ADDRESS

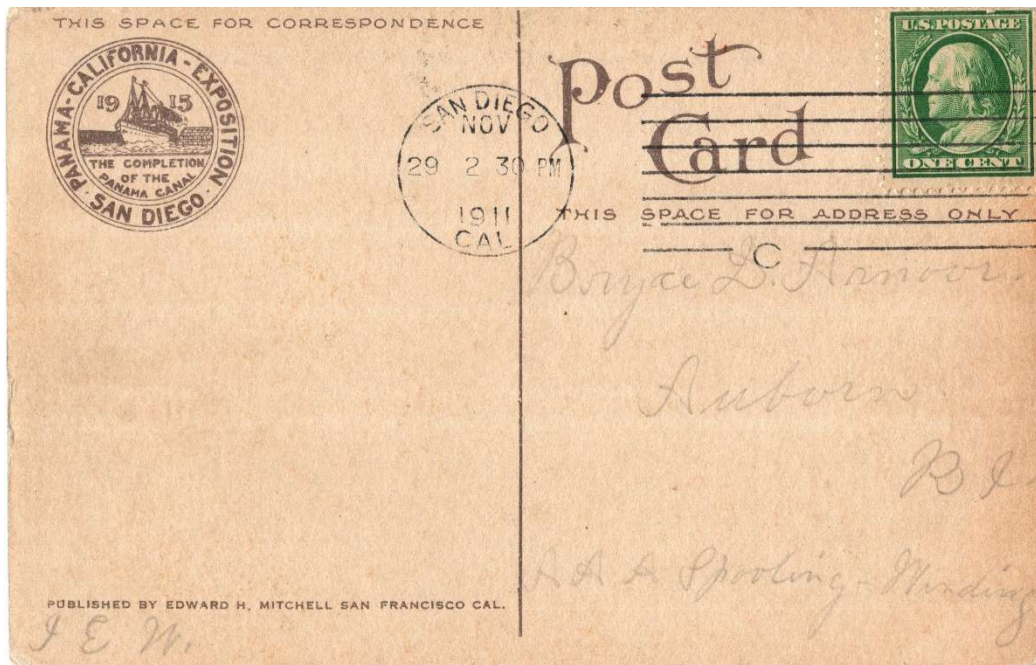
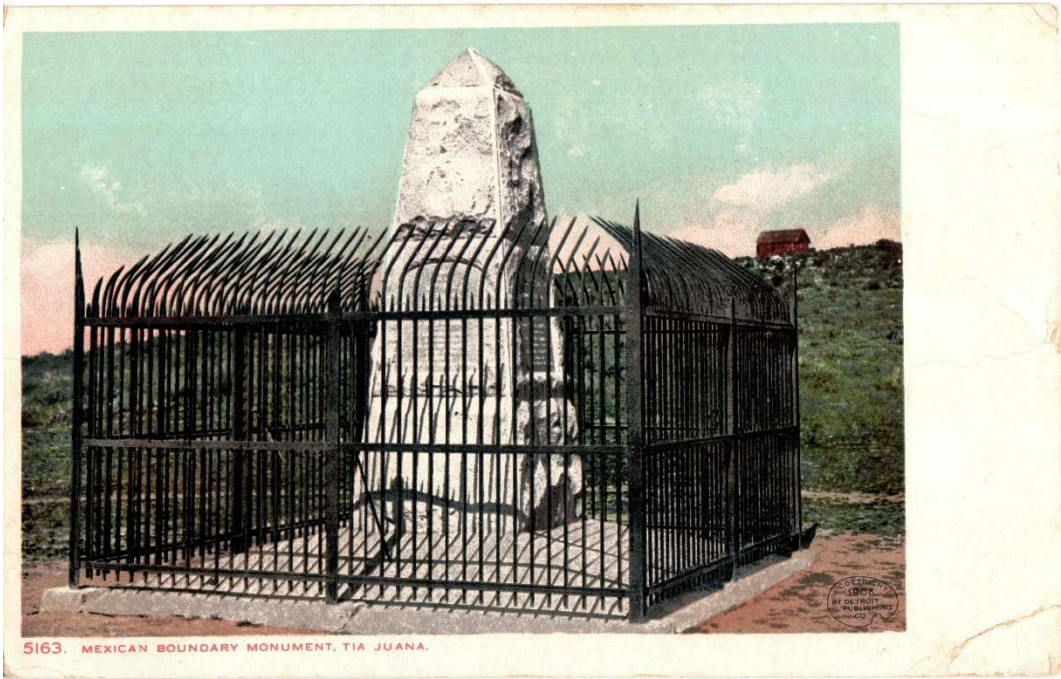


1904





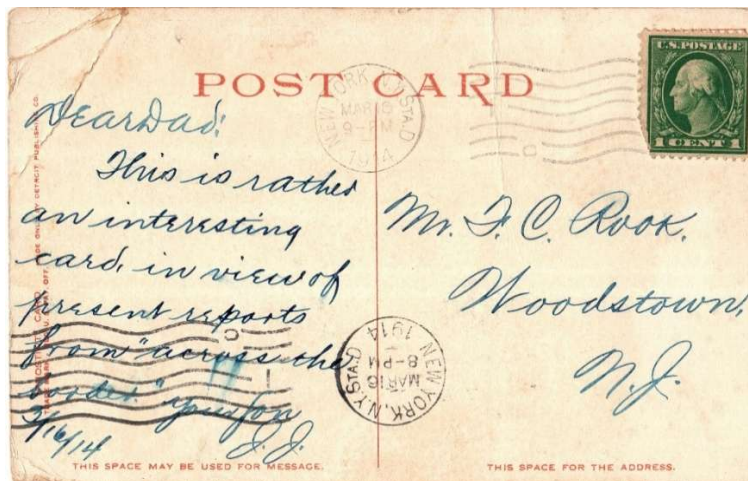
1911



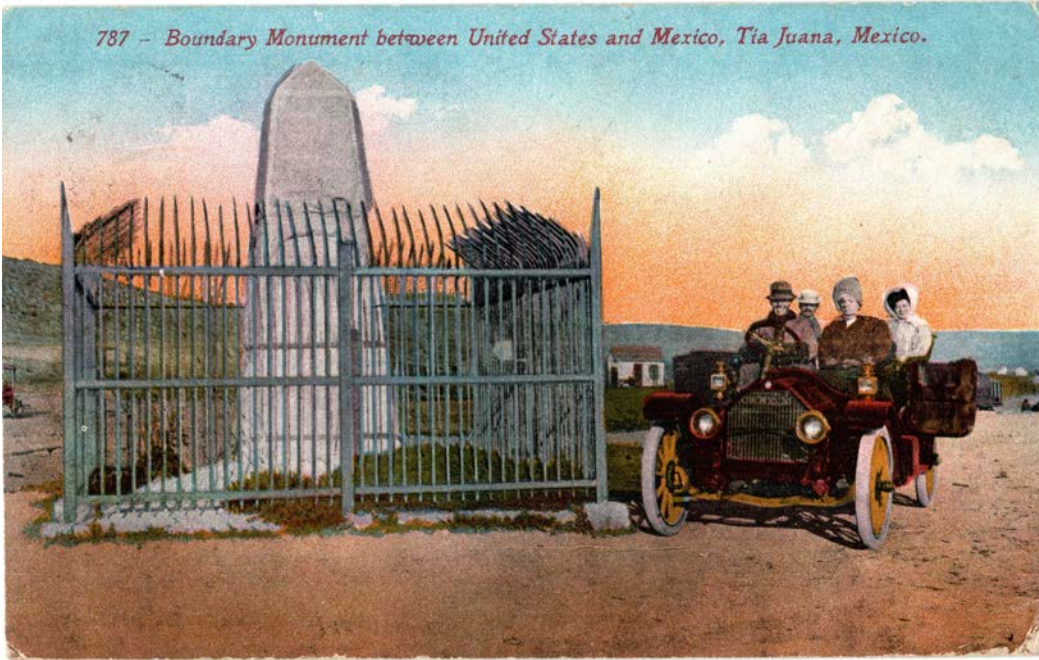
1914



5163 MEXICAN BOUNDARY MONUMENT, TIAJUANA DETROIT PUBLISHING CO.



787 - Boundary Monument between United States and Mexico, Tia Juana, Mexico.



THIS SPACE FOR CORRESPONDENCE

1,00

POSTAGE:
UNITED STATES AND POSSESSIONS 1¢
CANADA, MEXICO, FOREIGN 2¢

Post Card

THIS SPACE FOR ADDRESS ONLY

1913
PANAMA-CALIFORNIA-EXPOSITION
THE COMPLETION OF THE PANAMA CANAL
SAN DIEGO

just finished a romantic dinner in Mexico City. It's quite a trip, we are being all through the sea when I think of you with a gain all about it. Love.

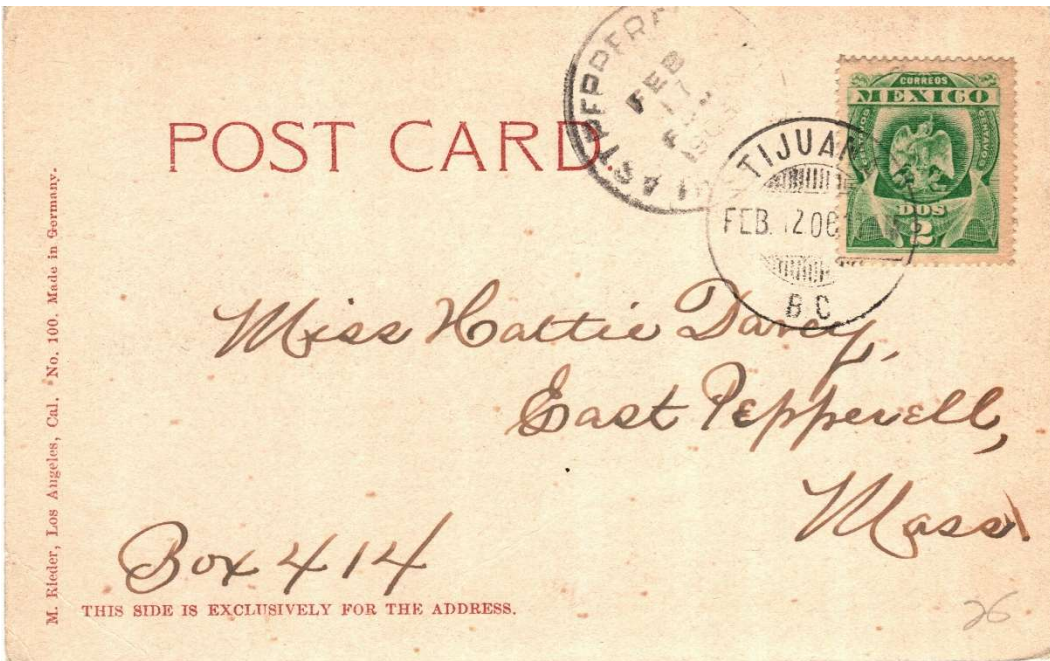
Ms. Lottie Smith
32 Clarendon St.
Walden
Mass.

PUBLISHED BY EDWARD H. MITCHELL SAN FRANCISCO CA

1908



Boundary Monument, Tijuana, Mexico.



POST CARD

M. Rieder, Los Angeles, Cal. No. 100. Made in Germany.

THIS SIDE IS EXCLUSIVELY FOR THE ADDRESS.

Miss Hattie Darcy,
East Pepperell,
Mass.

Box 414

26

121 - BOUNDARY MONUMENT BETWEEN U. S. AND MEXICO, TIA JUANA, MEXICO.



Post Card



JUL

THIS SPACE FOR CORRESPONDENCE

THIS SPACE FOR ADDRESS

PRINTED IN THE UNITED STATES

*Dear Addie -
Edith and Jane spent
a week in San
Diego when in camp
at Fort Loma. Today
we have come down
into Mexico - just
from - simply*

*Miss Addie Carmer
Dayden
New York
u.s.a.*

EDWARD H. MITCHELL, PUBLISHER, SAN FRANCISCO



Boundary Monument Tijuana, Mex

POST CARD

CORRESPONDENCE

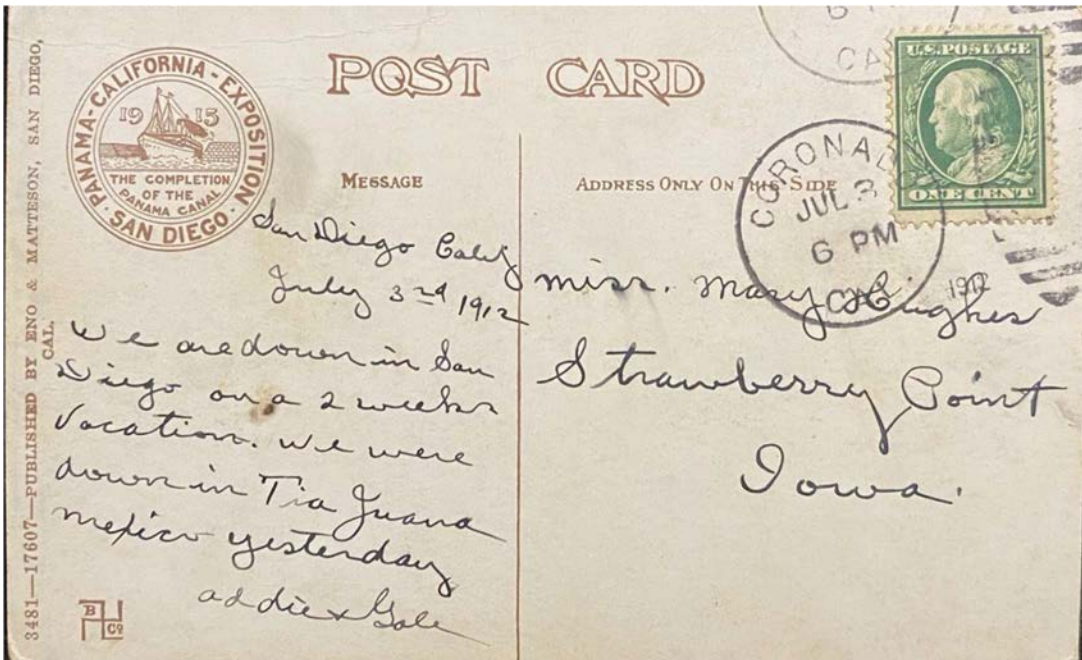
ADDRESS

▲ ▲ ▲ ▲
 ▲ PLACE ▲
 ■ STAMP ■
 ○ HERE ○
 ▼ ▼ ▼ ▼

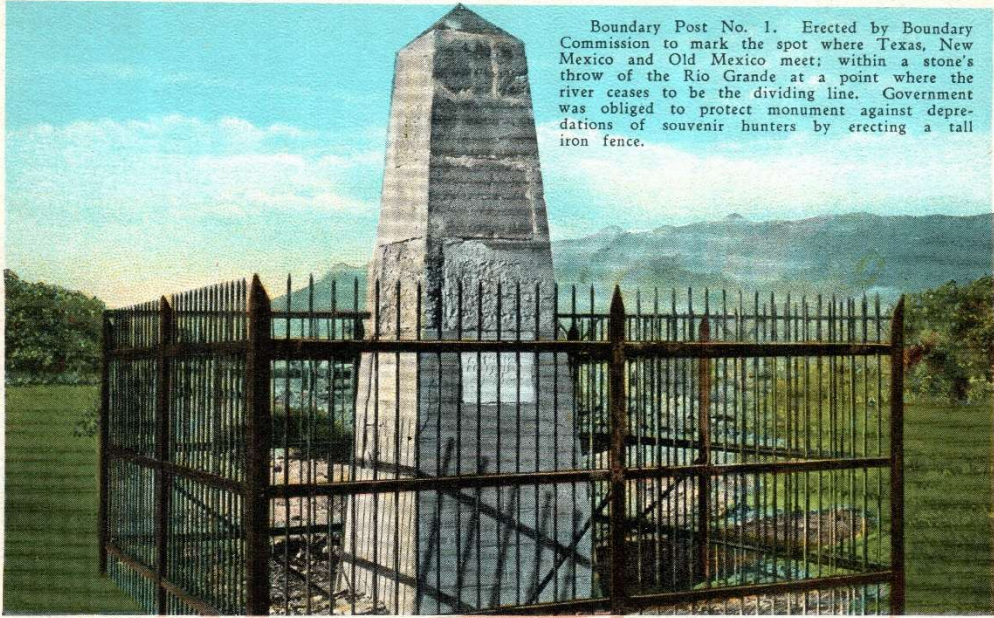
*Hello Ben
 how is every thing
 around Ford Co
 Ball.*

*Benjamin P. Phillips
 U.S.S. Yonkersough
 Mare Island
 Calif
 U.S.A.*

1912



INTERNATIONAL BOUNDARY MONUMENT No.1, MARKING INTERSECTION OF STATES OF



Boundary Post No. 1. Erected by Boundary Commission to mark the spot where Texas, New Mexico and Old Mexico meet; within a stone's throw of the Rio Grande at a point where the river ceases to be the dividing line. Government was obliged to protect monument against depredations of souvenir hunters by erecting a tall iron fence.

TEXAS, NEW MEXICO AND REPUBLIC OF MEXICO, NEAR EL PASO, TEXAS.

THIS SPACE FOR WRITING MESSAGES.

A-101174

POSTCARD

THIS SPACE FOR ADDRESS ONLY.

PLACE STAMP HERE
ONE CENT
FOR UNITED STATES
AND ISLAND
POSSESSIONS, CUBA,
CANADA AND MEXICO
TWO CENTS
FOR FOREIGN

H.S.B. 2204





POST CARD

△ A Z O △
△ PLACE △
△ STAMP △
O HERE O
△ A Z O △

CORRESPONDENCE HERE

NAME AND ADDRESS HERE